

APPENDIX No.7



Legend

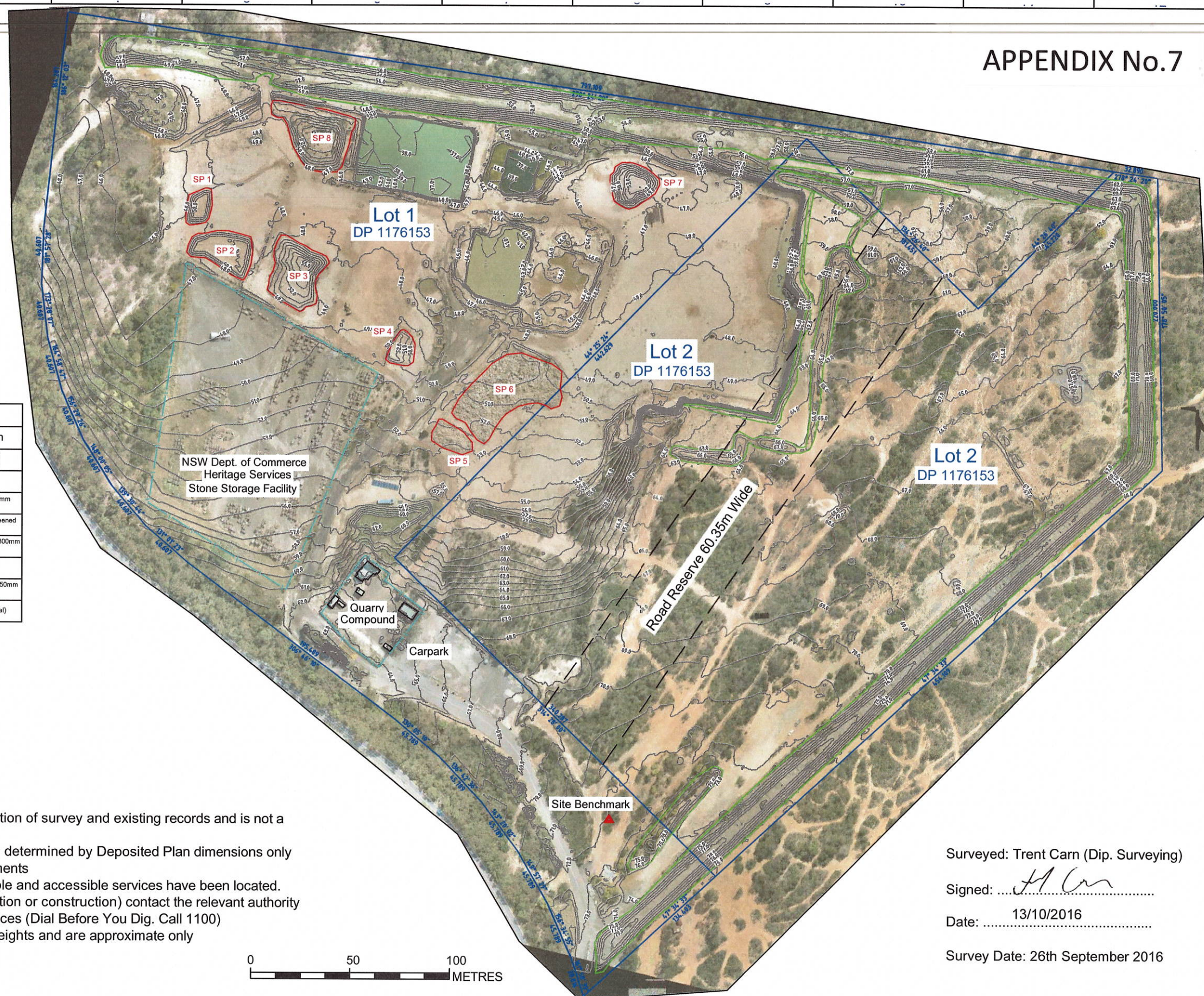
- Boundary
- Adjoining Boundary
- 2.0 Contour (major)
- Fence
- Bund Wall Existing
- Stockpile
- ▲ Site benchmark
PM53847 (RL 72.23m)

Stockpile Numbers				
No.	Density	Volume (m2)	Tonnes (m3)	Description
SP 1	1.5	779.81	1,169.72	Bedding Sand -20mm screened sandstone
SP 2	1.7	3,060.92	5,203.56	50CSM
SP 3	1.7	6,245.98	10,618.16	Selected Engineered -75mm crushed sandstone
SP 4	1.5	800.31	1,200.46	Bedding Sand-200mm screened sandstone
SP 5	1.7	120.67	205.14	Selected Engineered -150-300mm sandstone spalls
SP 6	1.9	3,037.95	5,772.11	Armour Rock
SP 7	1.7	3,379.65	5,745.41	Selected Engineered -75-150mm sandstone spalls
SP 8	1.8	6,482.25	11,668.05	Raw Feed (Blast Material)

Note:

- This plan has been prepared from a combination of survey and existing records and is not a "Survey" defined by the Surveying Act, 2002.
- The title boundaries shown herein have been determined by Deposited Plan dimensions only and have not been verified by field measurements
- Not all existing services are shown, only visible and accessible services have been located. Prior to any works onsite (demolition, excavation or construction) contact the relevant authority for detailed locations of all underground services (Dial Before You Dig. Call 1100)
- Contours have been interpolated from spot heights and are approximate only
- This note is an integral part of this plan

0 50 100 METRES



Surveyed: Trent Carn (Dip. Surveying)

Signed: *Trent Carn*

Date: 13/10/2016

Survey Date: 26th September 2016

REV	AMENDMENTS	APP'D	DATE	GENERAL NOTES / REFERENCES	SURVEYOR	DATE DRAWN	DRAWING No.	REV.
A	For information only	TC	11/10/16	This drawing remains the property of Spatial Technologies Pty Ltd and the information contained herein is intended for information purposes only. Spatial Technologies Pty Ltd accepts no responsibility for any loss or damages arising from the unauthorised use of this information.	JC	11/10/16	DWG-160926A	A
				Co-ordinate System - MGA Zone 56				
				Height Datum - AHD				



SCALE AT A3
Horiz 1:3000

Sandy Point Quarry
Base Survey

11/10/16 DWG-160926A